



Fletcher Village is a compact neighbourhood centre anchored by Coles, positioned within a high-growth residential pocket west of Newcastle. The centre caters to a predominantly family-oriented community and benefits from consistent local patronage.

Its curated mix of food, medical, and convenience tenants supports regular visitation, while the surrounding residential development pipeline continues to expand the catchment. Fletcher Village represents a sound opportunity for essential service providers and specialty operators seeking a foothold in a tightly held suburban market.

Trade Catchment



34.9

Average age of residents living in the main trade



74.6%

Owner/Purchasers



\$120,797

Average household income in the main trade area



54.7%

Average of main trade area residents are families

*The above Trade Catchment statistics are taken from Location report, September 2018. ABS Census Data 2011 and 2016 Queensland Government Statistics Office.

FLETCHER VILLAGE

Centre Details

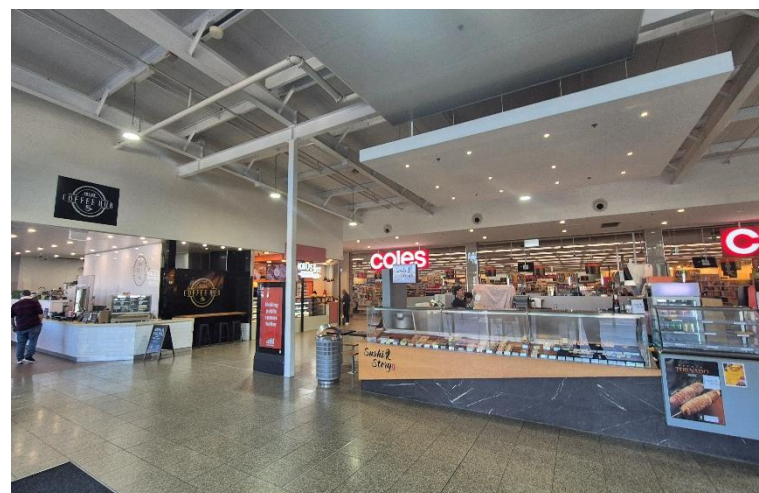
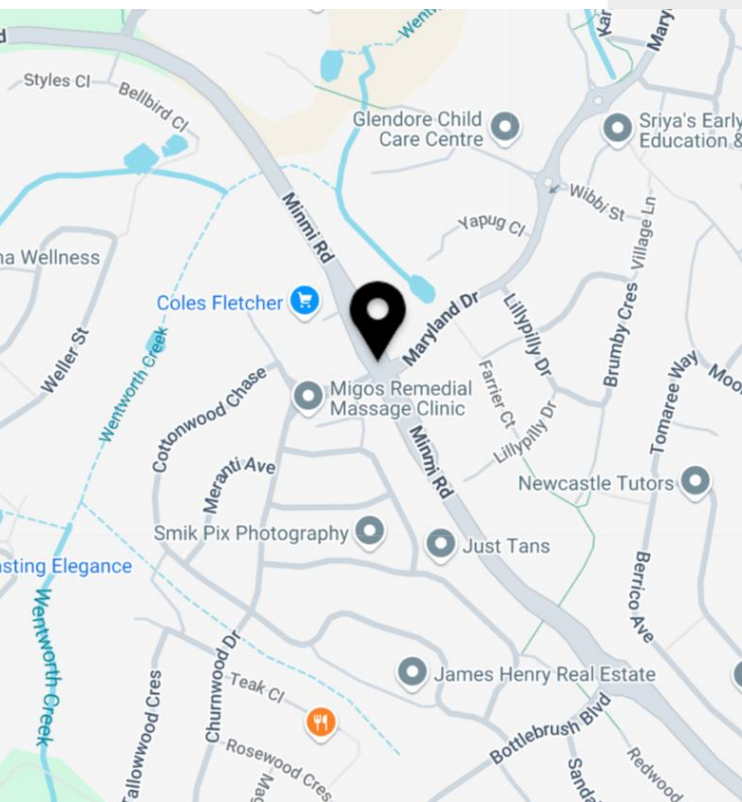
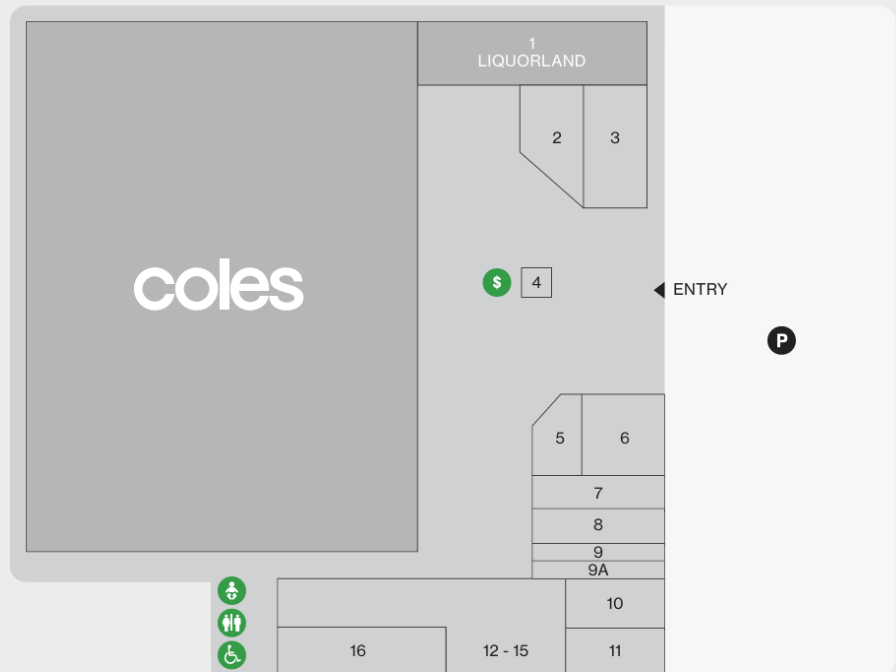
Coner of Churnwood Drive and Minmi Road,
Fletcher NSW 2287
fletchervillage.com.au

Centre Statistics

Centre Type	Neighbourhood
Total GLA	4,994 sqm
Total Tenants	16
Majors	Coles
National Retailers	Liquorland, Subway, Dominos and TSG
Specialty Retailers	15
Car Spaces	215
Centre MAT (Moving Annual Turnover)	\$51.2 million+ Excluding GST (Excludes Non-reporting tenants) As at June 2025

FLETCHER VILLAGE

Major	Coles
10	Day by Day Property Solutions
08	Dominos
03	Fades & Blades Barbers
02	Farnhams Butchery
12-15	Fletcher Clinic
16	Fletcher Dental Care
09	Indomex
05	Krust Bakery
01	Liquorland
07	Subway
04	Sushi & Story
09A	TSG
06	Village Coffee Hub
11	Your Chemist Shop
ATM	NextATM



Leasing enquiries:

James Lykissas 0420 373 372
David Faribairn 0437 406 341

DISCLAIMER

Every reasonable effort to ensure the accuracy of this brochure has been taken by Empire Property Partners Pty Ltd ACN 629 537 006 ("Empire"). At the time of publication (June 2025), the content of this brochure were deemed accurate to the best of the knowledge of Empire and its representatives. However, Empire does not offer any warranties or representations as to the information's accuracy or currency. Both Empire and the Centre owners reserve the right to change any concept or any design elements of the Centre as depicted at any time however is under no obligation to do so. In investigating whether or not to occupy premises within this Centre, intending occupiers must make and rely on their own enquiries in relation to, and in evaluation of, the information, predictions, opinions and statements contained in this brochure.